



HOULD ANGUS

ELITE FEMALE SALE

SATURDAY, NOV 16, 2024

SALE CLOSSES AT 6PM MST

32 Bred Cows & Donors Sell



CATTLE WITH **MATERNAL PERFORMANCE.**
GENETICS WITH **MATERNAL INTEGRITY.**

► www.houldangus.com ◀

HELLO TO ALL OF YOU ANGUS ENTHUSIASTS

WE ARE PLEASE TO OFFER YOU ALL THIS OUTSTANDING SET OF CATTLE DURING OUR 2024 ELITE FEMALE SALE.

Straight out of the middle of the herd. Several of these cows have been flushed and a couple have ET calves just weaned or ET calves coming this spring. Many of the cows are top rationing cows in our herd and have sold bulls in prior sales or will have them in future sales. It's very hard to pick and choose to make an offering like this. But I feel there are options for everyone here. From proven donors to young youthful cows that have several generations of proven cows and proven genetics. We hope to make this a very simple and smooth sale. We appreciate all of your interest in the past and wish you all good luck and hope you get exactly what you are after. Please contact me if you have any questions.

Take care,

J Bob and Ruby Hould Family



OUR CATTLE

For the last 24 years at Hould Angus we have turned against the mainstream hype of great arithmetic behind each cow. Rather, we have developed a herd of cattle that will survive and excel in our environment by using maternal genetics with maternal integrity.

What is Maternal Integrity? Take a look into Angus Journals and stud books from the last decade and you will see the ridiculous amount of bulls promoted to everyone as the future maternal giant of the breed (because of great arithmetic). Then, look at how many of those greats have completely fallen on their faces, only to leave commercial producers high and dry. We have done our due diligence and driven countless miles to physically evaluate daughters of the sires that we use at Hould Angus. This is one of many things numbers can't evaluate but your eye can. With this philosophy and a lot of patience, we hold out and let the dust settle before we utilize the sires in our program.



JBob and Ruby Hould with granddaughter, Hadley.



Tyler, Kaylee, Hadley and Harper.



Jessy and Eddie.

We believe that it is time for the maternal Angus cow to make a comeback. With fads and trends of mainstream Angus breeders and AI studs, it has become very evident that the high EPD cattle are not designed for an environment that requires them to be self-sufficient and last well into their teens in production. Is there a place for these cattle? Yes, I definitely believe so. But is it in a ranch scenario that requires cattle to be moderate in size (4.5-5.0 frame), deep bodied, extremely easy keeping and fertile? All of this without a heavy supplement? NO! I don't believe it to be possible to achieve in volume.

We are not anti EPD or DNA but stand on the side of caution with our desire to utilize them as a true breeding tool. With AAA playing with the numbers on a weekly basis, it makes it very hard for us to rely on them as much as many breeders do. To each their own, but we will choose to carry on as we have for now.

HOULD ANGUS SALE INFORMATION

BREEDING GUARANTEE

All cows have been preg tested and guaranteed bred. If you desire to test them upon arrival at your location that is your choice. Females have up to date vaccinations and will be poured with cleanup II prior to the sale.

BREEDING INFORMATION

Reference sires turned out on June 17 2024 and pulled August 15 2024.

TERMS & CONDITIONS

All cattle must be paid for in full on sale day or as otherwise arranged prior to the sale.

DELIVERY

Female delivery is the responsibility of the buyer. Hould Angus has contracted with Gary Bichsel to assist buyers with delivery. Contact 406-855-0334 to make arrangements.

SALE CONTACTS

Dwain Hould, Sales Rep, 406-321-4517

Heath McPherson, Sales Rep, 515-520-9388

HOW TO BID ONLINE ...IT'S EASY AS A, B, C!

Step A

Type salering.live into your browser. Salering.live can be used on your phone, tablet or desktop. We strongly recommend using Google Chrome as your browser for the best viewing and bidding experience.

Step B

Click the "Login/Registration" button. First time users, click "Registration." Enter your personal information. Check box for "I Agree to the Terms Above." Click "Next Step." A confirmation email will be sent to the email address used in registration. Salering.live reserves the right to refuse bidding credentials to any customer not meeting our specifications.

Step C

You are ready to go! You don't have to worry about a bidder number. As long as you are registered and logged in, you will be able to bid. Please remember you are on a highly sensitive web page. Please pay attention while scrolling or handling mobile/tablet devices.

Helpful Reminders!

PLEASE MAKE SURE YOU HAVE GOOD SERVICE! You should have, at bare minimum, two to three bars of service on your cellular devices. If you are using wifi, you need to have an upload speed of 5 mbps or more. Use www.speedtest.net to test your Internet.

Refresh your screen at sale time. Do not let your computer sit idle for over an hour and then return and try to bid. The website may have logged you out.



SALE
RING
Live



WWW.SALERING.LIVE

REFERENCE SIRES

OCC Freedom 801F AAA 20335833

O C C Practical 841P
O C C Wholesome 667W
 O C C Juanada 664R
 O C C Practical 841P
O C C Dixie Erica 628W
 Chloe Dixie Erica 7313

O C C Focus 813F
 O C C Juanada 968G
 O C C Emblazon 854E
 O C C Juanada 775C
 O C C Focus 813F
 O C C Juanada 968G
 Papa Forte 1921
 O C C Dixie Erica 826J

CED	BW	WW	YW	MILK	\$EN
+15	-3.7	+40	+68	+20	+18



JBob Practical 213 AAA 20590285

O C C Focus 813F
O C C Practical 841P
 O C C Juanada 968G
 Emulation N Bar 5522
J J J Juanada 1650
 Cole Creek 104 Juanada 8M

Basin Rainmaker 654X
 Dixie Erica of C H 1019
 O C C Eureka 865E
 O C C Juanada 774A
 Emulation 31
 Ankony 8F78 Lass 8F275
 C H Quantum 3330
 Cole Creek 104 Juanada 1256

CED	BW	WW	YW	MILK	\$EN
+11	-1.5	+22	+43	+19	+22



CFC Fusion MT1 AAA 19582587

O C C Emblazon 854E
O C C Tremendous 619T
 O C C Dixie Erica 960E
 Leachman Right Time
Miss Wix 2022 HC Mc Cumber
 Miss Wix 7111 of Mc Cumber

D H D Traveler 6807
 Dixie Erica of C H 1019
 O C C Anchor 771A
 O C C Dixie Erica 907C
 N Bar Emulation EXT
 Leachman Erica 0025
 G D A R Traveler 71
 Miss Wix 365 of Mc Cumber

CED	BW	WW	YW	MILK	\$EN
+17	-2.8	+55	+90	+23	+5



O C C Jock 703J AAA 20602914

O C C Homer 650H
O C C Rear End 751R
 FCC Revolution Rose 995N
 O C C Moderator 825M
O C C Pollyanna 636B
 O C C Pollyanna 683X

O C C Focus 813F
 O C C Dixie Erica 816B
 O C C Joker 620J
 O C C Revolution Rose 887H
 O C C Headliner 661H
 O C C Dixie Erica 845K
 O C C Remarkabull 937R
 O C C Pollyanna 944H

CED	BW	WW	YW	MILK	\$EN
+9	-.4	+40	+64	+17	+24

Bruin Kairos 2850 AAA 20827392

O C C Emblazon 854E
O C C Jules 790J
 O C C Juanada 709Z

D H D Traveler 6807
 Dixie Erica of C H 1019
 R R Hero 6267
 O C C Juanada 709V

Cole Creek Black Cedar 46P
Bruin 46P Blackbird 7290
 Falcon Blackbird 6071

C H Quantum 6247
 Cole Creek Clova Juanada 67
 Falcon Blackbird 6071
 Vermilion Blackbird 5044

CED	BW	WW	YW	MILK	\$EN
+8	+.6	+45	+78	+23	+15

JBob Jester 221 AAA 20590279

O C C Emblazon 854E
O C C Joker 620J
 O C C Juanada 709V

Emulation N Bar 5522
J J J Juanada 1650
 Cole Creek 104 Juanada 8M

D H D Traveler 6807
 Dixie Erica of C H 1019
 Cole Creek Oscar 92R
 Juanada of Rollin Rock 0355

Emulation 31
 Ankony 8F78 Lass 8F275
 C H Quantum 3330
 Cole Creek 104 Juanada 1256

CED	BW	WW	YW	MILK	\$EN
+8	+.3	+23	+37	+24	+20

JAD Emuleric 247 S41 AAA 20595986

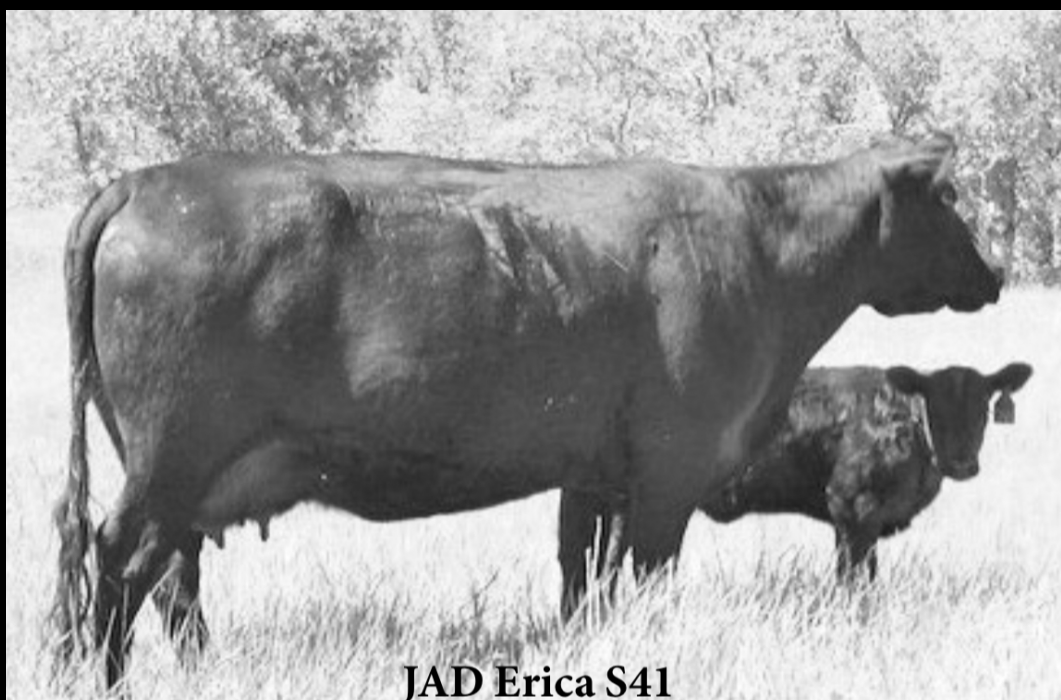
F C R Elation Lad 652
Emulation 31
 Miss Emulous 243

JAD Prudent Lad 6157
JAD Erica S41
 Shoshone Erica A344

Elation Lad 3
 Blackcap Madonna L 10
 Emulous of T N 19
 Miss Para Emulous 2
 Shoshone Lud 840
 Shoshone Prudence 6157
 Shoshone Euston 3131
 Shoshone Erica A345

CED	BW	WW	YW	MILK	\$EN
+7	-.2	+30	+44	+21	+20

DAM OF JAD EMULERIC 247 S41



JAD Erica S41



J J J Juanada 1750

TATTOO: 1750 DOB: 4/10/2011 AAA: 17423567

Emulation 31

F C R Elation Lad 652
Miss Emulous 243

Emulation N Bar 5522

Ankony 8F78 Lass 8F275

Ankonian Dynamo 27542
Ankony B999 Lass 26832

C H Quantum 3330

G D A R Quantum 1245
Dixie Erica of C H 6180

Cole Creek 104 Juanada 8M

Cole Creek 104 Juanada 1256

Cole Creek Juanada Lad 104
Cole Creek Juanadamere 534

CED	BW	WW	YW	MILK	\$EN
+11	-1.6	+29	+53	+20	+19

This is an opportunity to purchase one of the ranches most prolific producers. She lost her 2 day old 6807 bull calf to coyotes in early July and I kept her out of the bulls so she could get flushed. We have about 30 embryos saved up on this cow and a few ET OCC Linebred calves just weaned. This cows full sisters are all in the ET center again. 1750 would be in ET right now but I wanted to offer her for sale to you all first. I think if this cow goes straight to ET center and flushed a couple times and bred back again she will last a few more years. This is a great cow and opportunity. OPEN.



LOT 1 - JJJ JUANADA 1750



Hould Juanada 3250

TATTOO: 3250 DOB: 4/2/2013 AAA: 19024916

Eston Encounter M G 55 71

Eston M G 4W
Blackcap of A L F 10S

Wandering CRK Dynasty JRM 2F

Rose G V 37U

Bandoliermere G V 4N
Rose G V 23N

C H Quantum 3330

G D A R Quantum 1245
Dixie Erica of C H 6180

Cole Creek 104 Juanada 8M

Cole Creek 104 Juanada 1256

Cole Creek Juanada Lad 104
Cole Creek Juanadamere 534

CED	BW	WW	YW	MILK	\$EN
+7	-0.3	+26	+40	+22	+19

We have had numerous Wandering Creek Dynasty daughters born here. There is a lot of good in him and 3250 and all of her sisters have been a testament to his maternal value. For several years 3250 and her sisters were all pathfinder cows. As well as 3250's full brother 304's daughters. This cow is open and ready to flush for a reason. But we have chosen to sell her as I have a lot of cows getting flushed at the moment. And we have retained her daughter by OCC Cortez to keep her going. 105 on her calves. Great cow and opportunity.



NCC Dixie Erica 3048

TATTOO: 3048 DOB: 2/25/2013 AAA: 19024300

O C C Focus 813F

Basin Rainmaker 654X
Dixie Erica of C H 1019

O C C Paxton 730P

O C C Blackbird 736K

O C C Great Plains 943G
O C C Blackbird 824G

O C C Discovery 918D

Rito 9FB3 of 5H11 Fullback
Erica Lassie of R R 766B

O C C Dixie Erica 600G

O C C Dixie Erica 907C

N Bar Emulation EXT
Dixie Erica of C H 1019

CED	BW	WW	YW	MILK	\$EN
+10	-0.9	+35	+60	+21	+18

I purchased this cow at the Ryan Neiman dispersal sale. I have flushed her numerous times and have several RR Hero 6267 calves coming out of her this winter. Staigh OCC bred cow. Great potential here. Bred to Practical 213. 99 on her calves.



LOT 3 - NCC DIXIE ERICA 3048



JSK Enchantress 4004

TATTOO: 4004 DOB: 8/1/2014 AAA: 18132719

Traveler 1148 G D A R

Q A S Traveler 23-4
Blackcap Forever 485 G D A R

Gardens Transition 7205 S1

N Bar Clova Pride 2264

Ankonian Dynamo
Clova Pride N Bar 7352

N Bar Explosion

N Bar Emulation EXT
N Bar Kinochtry Beauty 4288

N Bar Enchantress A1375

N Bar Enchantress U131

T A El Tigre 423
N Bar Enchantress 4906

CED	BW	WW	YW	MILK	\$EN
+4	-0.8	+28	+52	+19	+20

I purchased this cow and her full sisters at the JSK dispersal as heifer calves. This cows full sister 4003 is an ideal made cow that has a great production record just 4004. I really hate letting a cow like this go but several daughters will be retained. Old Foundation genetics here. Bred to JAD Emuleric 247. 98 on her calves.

5**Hould Juanada 4303**

TATTOO: 4303 DOB: 3/20/2014 AAA: 18622972

O C C Focus 813F

Basin Rainmaker 654X
Dixie Erica of C H 1019**JBob Focal Point 222**

O C C Dixie Erica 778J

Papa Durabull 9805
O C C Dixie Erica 816B

Horse Butte 6143 of 7143

Horse Butte 1116 of 3116
HBR Shoshone Ester 7143**Hould Juanada 2111**

Cole Creek Juanadamere 096

C H Quantum 3330
Cole Creek 104 Juanada 1256

CED	BW	WW	YW	MILK	\$EN
+9	+0.1	+37	+72	+28	+6

High production cow with years of life left in her. 4303 might be the highest ratio cow on the ranch. Spencer Cooney bought her Encore 6143 bull calf who was the top selling bull of that sale. This is an excellent cow that originates from Juanada 1450's full sister. Bred to Fusion. 112 on calves



**LOT 5 - HOULD
JUANADA 4303
WITH HER 14 DAY
OLD ENCORE 6143
BULL CALF**



LOT 6 - HOULD MARSHALL QUEEN 4308

6**Hould Marshall Queen 4308**

TATTOO: 4308 DOB: 3/20/2014 AAA: 17951557

O C C Emblazon 854E

D H D Traveler 6807
Dixie Erica of C H 1019**O C C Jet Stream 825J**

O C C Juanada 968G

O C C Eureka 865E
O C C Juanada 774A

Pinebank Waigroup 41/97

Pinebank Waig 31/95
Pinebank 639/88**SCC Marshall Queen C723**

Msar Marshall Queen 437-615

G D A R Rainmaker 340
Msar Marshall Queen 229-437

CED	BW	WW	YW	MILK	\$EN
+9	-0.4	+26	+43	+21	+22

Super nice OCC Jetstream daughter out of a a productive Pinebank daughter who carries the red gene. So 4308 has a chance that she would carry the red gene as well. This cow has done an outstanding job for us and we have retained her 5522 XP daughters to stay here and pass along this cow family. Several bulls have been sold in our annual production sale. Bred to OCC Jock. 96 on her calves.



7**Juanada of Thistledew 5X11**

TATTOO: 5511 DOB: 3/21/2015 AAA: 18369391

Indreland Ext 5520
Indreland Ext 8904
 I A Power Keyban 016

I A T6807 Hyalite 328
Indreland Juanada 7042
 I A Viking Keyban 87

N Bar Emulation EXT
 I A Viking Keyban 87

PJM Powerpoint
 Juanada Keyban of L C 88

D H D Traveler 6807
 I A Hyalite Viking 818

Viking 975 G D A R
 Juanada Keyban of L C 88

CED	BW	WW	YW	MILK	\$EN
+3	+0.9	+25	+40	+21	+22

Full Indreland bred cow that has done her job without effort. Good old proven genetics that excel in a low input environment. Bred to Fusion. 103 on her calves.

8**Hould Chloe 5025**

TATTOO: 5025 DOB: 3/24/2015 AAA: 18405460

D H D Traveler 6807
G D A R Traveler 9161
 G D A R Sapphire 728

Shoshone Felix 6310 J O D
W C R Black Chloe 821U
 W C R Black Chloe 98

Q A S Traveler 23-4
 Bemindful Maid D H D 0807

Traveler 1148 G D A R
 G D A R Sapphire 5161 L T

Shoshone Eric 1701
 Shoshone Frances MHE63-93

Hero 6267 of R R 2418
 R A Black Chloe 323

CED	BW	WW	YW	MILK	\$EN
+6	+0.5	+27	+49	+23	+19

I larger outlined cow that works her tail off. Her bulls have always caught the attention of buyers. Her OCC Cortez daughter is outstanding and will keep her genetics going. Bred to OCC Jock. 102 on her calves.

9**Hould Juanada 5035**

TATTOO: 5035 DOB: 3/3/2015 AAA: 19642367

D H D Traveler 6807
G D A R Traveler 9161
 G D A R Sapphire 728

D D A Fahren 21X
JJJ Juanada 6116
 Cole Creek 104 Juanada 8M

Q A S Traveler 23-4
 Bemindful Maid D H D 0807

Traveler 1148 G D A R
 G D A R Sapphire 5161 L T

Fahren of Wye Umf 5830
 D D A Melisa 549

C H Quantum 3330
 Cole Creek 104 Juanada 1256

CED	BW	WW	YW	MILK	\$EN
+12	-1.2	+26	+53	+24	+19

Great producing daughter of GDAR Traveler 9161. Her dam was a solid producer here and came from the purchase of the Whitney Creek Ranch cow herd and Taylor Orr. This is a good cow. Bred to Jester. 103 on her calves.

10**Hould Erelite 6013**

TATTOO: 6013 DOB: 3/8/2016 AAA: 18566916

Emulation N Bar 5522
Sinclair Emulation 5522 XP
 N Bar Primrose Y3051

Bannon of Wye UMF 8420
W C R Erelite 906W
 W C R Erelite 6085

Emulation 31
 Ankony 8F78 Lass 8F275

N Bar Emulation EXT
 N Bar Primrose 2429

Friars of Wye Umf 7996
 Blackbird of Wye Umf 7632

Indreland Traveler 2508
 Indreland Erelite 4020

CED	BW	WW	YW	MILK	\$EN
+5	+0.1	+30	+47	+20	+21

This cow was our picture cow for one of our previous sales. She is an absolute no miss cow. Perfect udder and never a hiccup in terms of production and fertility. This is a great cow and we are retaining a Jetstream and Best Yet daughter to keep the cow family going. Her OCC Jetstream son sold to Jett Anderson of Whitewater. Bred to JBob Practical 213. 105 on her calves.

11**Hould Juanadamere 6035**

TATTOO: 6035 DOB: 3/28/2016 AAA: 18566920

PBC 707 1M F0203
FairView JH Rito F0203 2223
 Cole Creek 104 Juanada 8M

D D A Fahren 21X
JJJ Juanadamere 6104
 Cole Creek Juanadamere 588

R R Rito 707
 Evocate Princess T

C H Quantum 3330
 Cole Creek 104 Juanada 1256

Fahren of Wye Umf 5830
 D D A Melisa 549

Cole Creek Juanada Lad 104
 Cole Creek Juanadamere 1766

CED	BW	WW	YW	MILK	\$EN
+7	+1.	+23	+46	+17	+24

Not many daughters of the FO203/Juanada 1450 son were ever made here. But the ones that were made have stayed here and are very productive, fertile and functional cows. Pound for pound this cow knows how to build a calf properly and take fantastic care of it. She is full uddered and productive. Bred to OCC Freedom. 99 on her calves

12**Hould Katerines Lass 6041**

TATTOO: 6041 DOB: 4/1/2016 AAA: 18566922

O C C Focus 813F
JBob Focal Point 222
 O C C Dixie Erica 778J

High Valley 4C6 Ambush
W C R Katherines Lass 703T
 W C R Katherines Lass 69

Basin Rainmaker 654X
 Dixie Erica of C H 1019

Papa Durabull 9805
 O C C Dixie Erica 816B

Paramont Ambush 2172
 High Valley Gloria 1Q2

A A R Seven Eleven 1574
 R A Jody's Lass 324

CED	BW	WW	YW	MILK	\$EN
+7	+1.1	+37	+70	+27	+13

Bigger outlined daughter of our herd sire 222. Her mother was an elite cow sired by Ambush 4C6 and left us a few outstanding daughters including this one. Numerous bulls have been sold out of this cow in our production sales. Bred to OCC Freedom. 102 on her calves.

13**Hould Chloe 7219**

TATTOO: 7219 DOB: 3/12/2017 AAA: 19024876

Leachman Right Time
L T Bandwagon 3105
 L T Ms Vikings Value 0256

N Bar Emulation EXT
 Leachman Erica 0025
 Sitz Value 7097
 MS Polo Peak 1148 5970

Shoshone Felix 6310 J O D
W C R Black Chloe 821U
 W C R Black Chloe 98

Shoshone Eric 1701
 Shoshone Frances MHE63-93
 Hero 6267 of R R 2418
 R A Black Chloe 323

CED	BW	WW	YW	MILK	\$EN
+3	+1.	+35	+50	+29	+14

Another solid producing daughter of LT Bandwagon 3105 from the same cow as 5025. Great udder and 105 on her calves. Bred to Fusion.

14**Hould Juanada 8007**

TATTOO: 8007 DOB: 3/6/2018 AAA: 19319745

O C C Emblazon 854E
O C C Jet Stream 825J
 O C C Juanada 968G

D H D Traveler 6807
 Dixie Erica of C H 1019
 O C C Eureka 865E
 O C C Juanada 774A

D D A Fahren 21X
J J J Juanadamere 6104
 Cole Creek Juanadamere 588

Fahren of Wye Umf 5830
 D D A Melisa 549
 Cole Creek Juanada Lad 104
 Cole Creek Juanadamere 1766

CED	BW	WW	YW	MILK	\$EN
+10	-0.3	+34	+53	+21	+22

Bigger outlined OCC Jetstream daughter out of our donor Juanada 6104. We are retaining this cows OCC Remarkable heifer calf and have several calves that will be full siblings to this cow coming this spring. Beautiful cow and Genetics with Maternal Integrity. Bred to Practical. 101 on her calves.

15**Hould Lady 8029**

TATTOO: 8029 DOB: 3/9/2018 AAA: 19319753

O C C Emblazon 854E
O C C Jet Stream 825J
 O C C Juanada 968G

21AR Denali 0215A
Brusett Black Lady Z25
 Brusett Black Lady W660

D H D Traveler 6807
 Dixie Erica of C H 1019
 O C C Eureka 865E
 O C C Juanada 774A

H A R B Denali 788 J H
 21AR Blackcap 7007A
 Vermilion Extra T221
 Brusett Black Lady P660

CED	BW	WW	YW	MILK	\$EN
+8	+1.	+39	+74	+18	+11

Sweetheart of a cow. I purchased her mother from Strommen in ND at their dispersal sale. 8029 has a tremendous 5522 XP daughter and a Horse Butte 1126 daughter that will remain here. Very fancy uddered. Bred to Fusion. 96 on her calves.

16**Hould Emily 8039**

TATTOO: 8039 DOB: 3/11/2018 AAA: 19319763

O C C Rear End 751R
O C C Big Time 746Z
 O C C Dixie Erica 771R

O C C Homer 650H
 FCC Revolution Rose 995N
 O C C Missing Link 830M
 O C C Dixie Erica 776M

Paturm 05 of 81 54
Emily 4B24 of 05 812
 Emula U812 of 45 82

Paturm 81 of 45 23
 Revella 54 of 162 310
 Paturm 45 of 638J 4-8
 Lady 82 of 4221 122

CED	BW	WW	YW	MILK	\$EN
+3	+2.	+52	+90	+14	+2

Anyone who has gone through our cowherd in the last few years will attest the our OCC Big Time are outstanding and productive. This cows mother originated from the Paul Turner herd and was a full sister to one of his favorite herd bulls. Wide based and feminine fronted. Hard to pass by this cow and not appreciated her. Bred to OCC Freedom. 101 on her calves.

17**Hould Delia 9012**

TATTOO: 9012 DOB: 3/6/2019 AAA: 19586824

Emulation N Bar 5522
JBob Emulation 767
 Hould Juanada 9021

L T Bandwagon 3105
Hould Delia 7231
 J J J Delia 8102

Emulation 31
 Ankony 8F78 Lass 8F275
 O C C Anchor 771A
 Cole Creek 104 Juanada 8M

Leachman Right Time
 L T Ms Vikings Value 0256
 R R Rito 707
 Octoraro Delia 151

CED	BW	WW	YW	MILK	\$EN
+8	-0.7	+39	+63	+21	+15

This is another young cow that should never be leaving here. The 767 daughters are making nice feminine fronted cows with picture perfect udders. This cow takes all of that to the next level. 9012 is flawless in every aspect. Loads of potential here. Bred to JBob Practical 213. 99 on her calves.

18**Hould Juanada 0111**

TATTOO: 0111 DOB: 3/3/2020 AAA: 19957519

Bar Wick Eureka 943 310
Duff Honcho 426
 Duff BI 619 LadyPop 1017

O C C Eureka 865E
 O C C Dixie Erica 943D
 Duff Basic Instinct 6501
 Duff NL B351 Lady Pop 619

Emulation N Bar 5522
J J J Juanada 1850
 Cole Creek 104 Juanada 8M

Emulation 31
 Ankony 8F78 Lass 8F275
 C H Quantum 3330
 Cole Creek 104 Juanada 1256

CED	BW	WW	YW	MILK	\$EN
+10	-1.6	+39	+59	+23	+17

The Honcho daughters have become very popular the last few years. This particular one has the credentials to become a great cow. Her mother is our 1850 donor cow how has done an outstanding job for us and we have dozens of embryos in storage out of her. Definitely loads of potential here. Bred to JBob Jester.

19**Hould Juanada 0119**

TATTOO: 0119 DOB: 3/6/2020 AAA: 19959024

O C C Work of Art 766W
O C C Best Yet 766B
 O C C Dixie Erica 817Y

O C C Great Plains 943G
 O C C Dixie Erica 662J
 O C C Eureka 865E
 O C C Dixie Erica 612H

Horse Butte 6143 of 7143
Hould Juanada 3104
 JJJ Juanadamere 6104

Horse Butte 1116 of 3116
 HBR Shoshone Ester 7143
 D D A Fahren 21X
 Cole Creek Juanadamere 588

CED	BW	WW	YW	MILK	\$EN
+2	+2.3	+42	+76	+22	+2

This cows pedigree is stacked full of great cows and sires. All that have done an outstanding job making us several superior cows in our herd. And the potential of this cow is exciting. Like a lot of the Best Yets here she is bigger outlined but strong uddered and functional. Good young cow. Bred to Fusion 97 on her calves

20**Hould Juanada 0130**

TATTOO: 0130 DOB: 3/9/2020 AAA: 19959021

O C C Work of Art 766W
O C C Best Yet 766B
 O C C Dixie Erica 817Y

O C C Great Plains 943G
 O C C Dixie Erica 662J
 O C C Eureka 865E
 O C C Dixie Erica 612H

G D A R Traveler 9161
Hould Juanada 5035
 JJJ Juanada 6116

D H D Traveler 6807
 G D A R Sapphire 728
 D D A Fahren 21X
 Cole Creek 104 Juanada 8M

CED	BW	WW	YW	MILK	\$EN
+4	+1.5	+43	+83	+22	+5

A bigger outlined extremely easy keeping daughter of OCC Best Yet out of a high production daughter of GDAR 9161. And out of Juanada 6116 who just passed this year as a 18 yr old cow. Longevity with style and production. Bred to Jock. 109 on her calves

21**Hould Lady 0150**

TATTOO: 0150 DOB: 3/21/2020 AAA: 19885629

C C A Emblazon 702
CFC Cornerstone M71
 Miss Wix 2022 HC Mc Cumber

O C C Emblazon 854E
 Limestone Blackcap R128
 Leachman Right Time
 Miss Wix 7111 of Mc Cumber

O C C Jet Stream 825J
Hould Lady 8029
 Brusett Black Lady Z25

O C C Emblazon 854E
 O C C Juanada 968G
 21AR Denali 0215A
 Brusett Black Lady W660

CED	BW	WW	YW	MILK	\$EN
+12	-0.4	+49	+88	+18	-4

This one cow will be a high production cow for you just like her mother is. Cornerstone is a 1/2 brother to fusion and has the ? To be the 3rd highest bull in the bred for the fertility EPD. Her mother is an extremely attractive daughter of OCC Jetstream that sells in the sale as well. Buy them both and start a new cow family. Bred to JAD Emuleric 247. 101 on her calves.

22**Hould Katherines Lass 0177**

TATTOO: 0177 DOB: 4/13/2020 AAA: 21051567

O C C Big Time 746Z
O C C Cortez 819C
 O C C Dixie Erica 680W

O C C Rear End 751R
 O C C Dixie Erica 771R
 O C C Paxton 730P
 O C C Dixie Erica 903E

BT Right Time 24J
W C R Katherines Lass 6035
 W C R Katherines Lass 408P

Leachman Right Time
 Sitz Everelda Entense 1905
 Whitney Creek Maximus 24
 Rygs Kelseys Lass 421

CED	BW	WW	YW	MILK	\$EN
+3	+1.8	+40	+71	+17	+18

Our OCC Cortez daughters are not disappointing us. They are very moderate with perfect udders and lots of style. This one is no exception to that. Her mother was stylish and productive as well. Bred to Freedom

**MOTHER OF LOT 23****23****Hould Juanada Anne 1005**

TATTOO: 1005 DOB: 3/7/2021 AAA: 20541528

O C C Work of Art 766W
O C C Best Yet 766B
 O C C Dixie Erica 817Y

O C C Great Plains 943G
 O C C Dixie Erica 662J
 O C C Eureka 865E
 O C C Dixie Erica 612H

Mc Cumber Rito Rolette 1108
Pine Coulee Juanada Anne B91
 Indreland Juanada Anne 5403

Sinclair Entrepreneur 8R101
 B Pride 636 of Mc Cumber
 D H D Traveler 6807
 I A Fore Viking 383

CED	BW	WW	YW	MILK	\$EN
-2	+3.6	+50	+90	+23	-3

Bigger outlined and productive best describes this young cow. Her mother was very attractive and came from a cow family known for longevity and durability. This should make an excellent cow. Bred to JAD Emuleric 247

24**Hould Juanada 1015**

TATTOO: 1015 DOB: 3/12/2021 AAA: 20541525

O C C Work of Art 766W
O C C Best Yet 766B
 O C C Dixie Erica 817Y

O C C Great Plains 943G
 O C C Dixie Erica 662J
 O C C Eureka 865E
 O C C Dixie Erica 612H

Emulation N Bar 5522
J J J Juanada 1750
 Cole Creek 104 Juanada 8M

Emulation 31
 Ankony 8F78 Lass 8F275
 C H Quantum 3330
 Cole Creek 104 Juanada 1256

CED	BW	WW	YW	MILK	\$EN
+4	+0.9	+40	+77	+21	+3

I don't know if this one should be leaving. She is a daughter of the 1750 cow who is one of the 5522 x Juanada full sisters who will anchor this cow herd for years to come. Take advantage of these Genetics with Maternal Integrity. Bred to Fusion

25**Hould Erelite 1042**

TATTOO: 1042 DOB: 3/28/2021 AAA: 21051566

O C C Tremendous 619T
CFC Fusion 8MT1
 Miss Wix 2022 HC Mc Cumber

O C C Emblazon 854E
 O C C Dixie Erica 960H
 Leachman Right Time
 Miss Wix 7111 of Mc Cumber

Sinclair Emulation 5522 XP
Hould Erelite 6013
 W C R Erelite 906W

Emulation N Bar 5522
 N Bar Primrose Y3051
 Bannon of Wye UMF 8420
 W C R Erelite 6085

CED	BW	WW	YW	MILK	\$EN
+10	-0.8	+37	+62	+18	+20

Nice young daughter out of Fusion and the 6013 cow in the sale. I would bet good money that this cows bull by OCC Westward will be one of the top 2 yr old bulls that sell this spring. He is outstanding. My loss is your gain on this cow. Bred to Fusion. 96 on her calves.

26**Hould Juanada 1051**

TATTOO: 1051 DOB: 4/5/2021 AAA: 21051564

O C C Tremendous 619T
CFC Fusion 8MT1
 Miss Wix 2022 HC Mc Cumber

O C C Emblazon 854E
 O C C Dixie Erica 960H
 Leachman Right Time
 Miss Wix 7111 of Mc Cumber

Horse Butte 6143 of 7143
Hould Juanada 3120
 JJJ Juanada 8108

Horse Butte 1116 of 3116
 HBR Shoshone Ester 7143
 Emulation N Bar 5522
 Cole Creek 104 Juanada 8M

CED	BW	WW	YW	MILK	\$EN
+12	-1.2	+47	+78	+21	+7

A young Fusion daughter out of a high productive Encore/Juanada cow. These Fusion daughters are pretty hard to beat for udder quality and productivity. 101 on her calves.

27**Hould Juanada 1065**

TATTOO: 1065 DOB: 4/18/2021 AAA: 20541535

Horse Butte 6143 of 7143
JBob Genetic Rustler 440
 Hould Juanada 9021

Horse Butte 1116 of 3116
 HBR Shoshone Ester 7143
 O C C Anchor 771A
 Cole Creek 104 Juanada 8M

O C C Emblazon 854E
Hould Juanada 8003
 Hould Juanada 6015

D H D Traveler 6807
 Dixie Erica of C H 1019
 CAR Chinook 786
 JJJ Juanada 8104

CED	BW	WW	YW	MILK	\$EN
+6	+2.	+47	+76	+23	+3

Very attractive young daughter of the Genetic Rustler bull. Her Emblazon daughter was sold last year in a weak moment and I was told that she did an outstanding job with her calf. Outstanding enough that the new owners are flushing her. Which doesn't surprise me as her CAR Chinook mother is outstanding. And should be with the maternal credentials in her pedigree. I really like this cow pedigree. Bred to Fusion

28**Hould Erelite 2516**

TATTOO: 2516 DOB: 3/8/2022 AAA: 20910296

GCC Hunter 649U
O C C Freightcar 655F
 O C C Dixie Erica 805Y

O C C Hunter 928H
 O C C Juanada 862M
 O C C Jet Stream 825J
 O C C Dixie Erica 607P

Horse Butte 6143 of 7143
Hould Erelite 0126
 W C R Erelite 906W

Horse Butte 1116 of 3116
 HBR Shoshone Ester 7143
 Bannon of Wye UMF 8420
 W C R Erelite 6085

CED	BW	WW	YW	MILK	\$EN
+5	+1.5	+24	+41	+22	+21

Our OCC Freightcar daughters are doing a fantastic job. Perfect tidy udders and fleshing ease to spare. This young daughter of Freightcar will most likely be the highest rationing cow of the first calvers. She has a tick of white on her udder so I just wanted to mention that. Bred to JAD Emuleric 247.

29**Hould Juanada 2530**

TATTOO: 2530 DOB: 3/10/2022 AAA: 20881319

O C C Focus 813F
O C C Hunter 928H
 O C C Dixie Erica 960E

Basin Rainmaker 654X
 Dixie Erica of C H 1019
 O C C Anchor 771A
 Dixie Erica of R R 4345

Cole Creek Black Cedar 46P
Hould Juanada 9051
 Hould Juanada 9021

C H Quantum 6247
 Cole Creek Clova Juanada 67
 O C C Anchor 771A
 Cole Creek 104 Juanada 8M

CED	BW	WW	YW	MILK	\$EN
+3	+1.8	+42	+74	+22	+18

This one stings a lot. These Hunter daughters are for real and this cow is no exception. She is backed by an outstanding Black Cedar daughter from 9021 who is the mother of our herd sires Genetics Rustler, Emulation 767 and Elder Creek. I really like the potential this cow has for the future. Bred to JAD Emuleric 247

30**Hould Erica Lassie 2544**

TATTOO: 2544 DOB: 3/21/2022 AAA: 20881329

Emulation N Bar 5522

Emulation 31

Ankony 8F78 Lass 8F275

JBob Emulation 767

Hould Juanada 9021

O C C Anchor 771A

Cole Creek 104 Juanada 8M

BAA Electra 463B

B3R X500 Electr TNDTN R215HR

BAA Daisey 2227B

Hould Erica Lassie 9041

BAA Erica Lassie 0109A

Sitz Great Plains 9896

BAA Erica Lassie 7254A

CED	BW	WW	YW	MILK	\$EN
+4	+1.1	+50	+86	+18	+6

I would like to keep every daughter of 767 I have but I just can't. They are making outstanding cows with perfect udders and fertile as can be. This young cows mother is a no miss cow that doesn't make any mistakes and brings in monster calves every year. Bred to Bruin Kairos.

31**Hould Dixie Erica 2566**

TATTOO: 2566 DOB: 4/2/2022 AAA: 20953824

O C C Tremendous 619T

O C C Emblazon 854E

O C C Dixie Erica 960H

CFC Fusion 8MT1

Miss Wix 2022 HC Mc Cumber

Leachman Right Time

Miss Wix 7111 of Mc Cumber

O C C Paxton 730P

O C C Focus 813F

O C C Blackbird 736K

NCC Dixie Erica 3048

O C C Dixie Erica 600G

O C C Discovery 918D

O C C Dixie Erica 907C

CED	BW	WW	YW	MILK	\$EN
+16	-3.3	+43	+71	+22	+13

Another outstanding Fusion daughter out our OCC Paxton donor cow. This cow came in calf when I bought her mother at the Ryan Neiman dispersal sale. We retained her OCC Linebred calf for the future. Great potential here. Bred to Bruin Kairos

32**Hould Juanada 2572**

TATTOO: 2572 DOB: 4/5/2022 AAA: 20881339

Emulation N Bar 5522

Emulation 31

Ankony 8F78 Lass 8F275

JBob Emulation 767

Hould Juanada 9021

O C C Anchor 771A

Cole Creek 104 Juanada 8M

O C C Cortez 819C

O C C Big Time 746Z

O C C Dixie Erica 680W

Hould Juanada 9044

Hould Juanada 3950

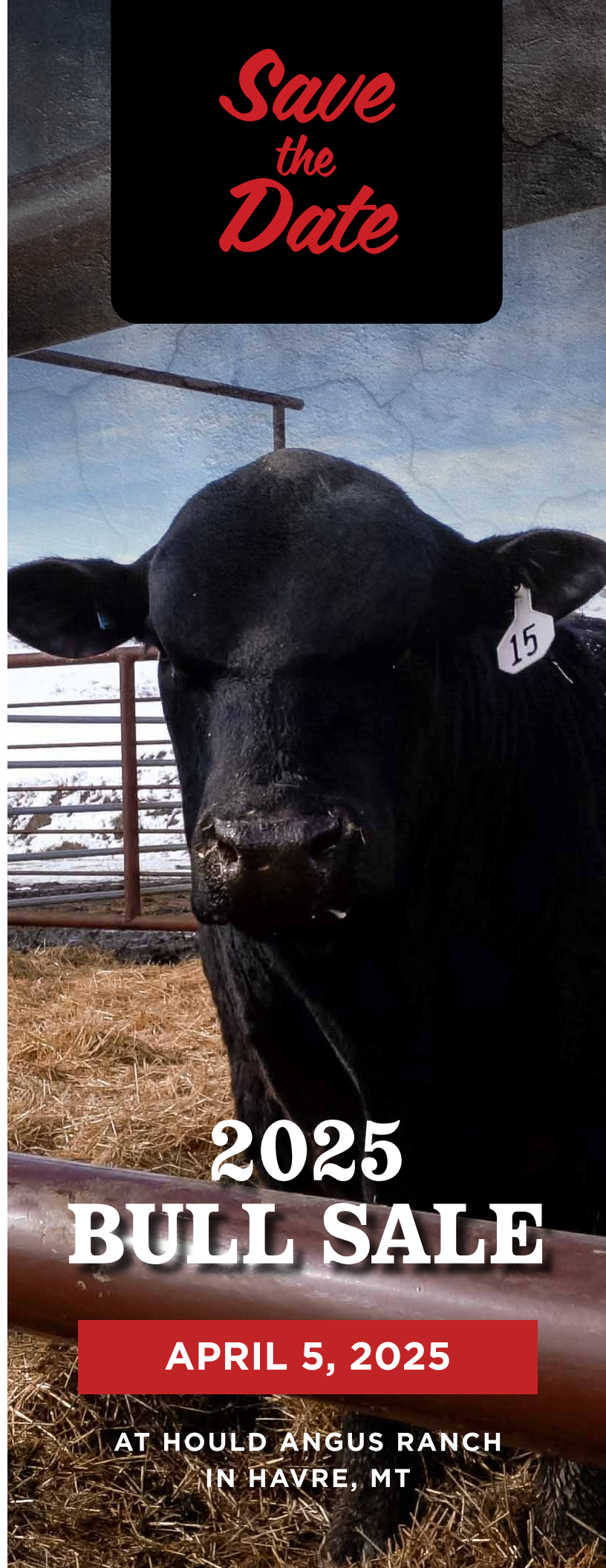
Basin Rainmaker 814Z

Cole Creek 104 Juanada 8M

CED	BW	WW	YW	MILK	\$EN
+12	-2.7	+48	+79	+20	+6

This is an outstanding young cow that has excellent cows all over in her pedigree. Her mother is phenotypically perfect and very productive. Double bred Juanada and loads of potential. Bred to JBob Jester.

Save
the
Date



2025
BULL SALE

APRIL 5, 2025

AT HOULD ANGUS RANCH
IN HAVRE, MT

CATTLE WITH
*Maternal
Performance*



GENETICS WITH
*Maternal
Integrity*

COLE CREEK JUANADA 1450 (8M)

The matriarch of our herd. Most females on the ranch will have her in there pedigree at least once. And many will have her several times in there pedigree. I will continue to line breed this cow into every cow on the ranch through sons and grandsons.



Juanada 1650



Juanada 1750



Juanada 4313



Juanada 1850



Juanada 7267



Juanada 9021



Juanada 6104



Juanada 4310

NEW ADDITIONS

Miss Wix 2022 is the dam to our herd sires Fusion and Cornerstone. After the success we have had with both Fusion and Cornerstone, we decided to purchase the full sisters of both sires.



Miss Wix 2022



CCA Emblazon 702 X Miss Wix 2022

OCC Blackbird 736K is the dam to OCC Paxton as well as our new addition, NCC Blackbird 3035, who is the full sister to OCC Paxton. We also have several other daughters of OCC Blackbird 736K that reside here.



OCC Blackbird 736K



NCC Blackbird 3035

OCC Dixie Erica 628W is the dam of our new herd sire OCC Freedom 801F and AI sire OCC Confidence. She is also the dam of OCC Zodiac and Blueprint.



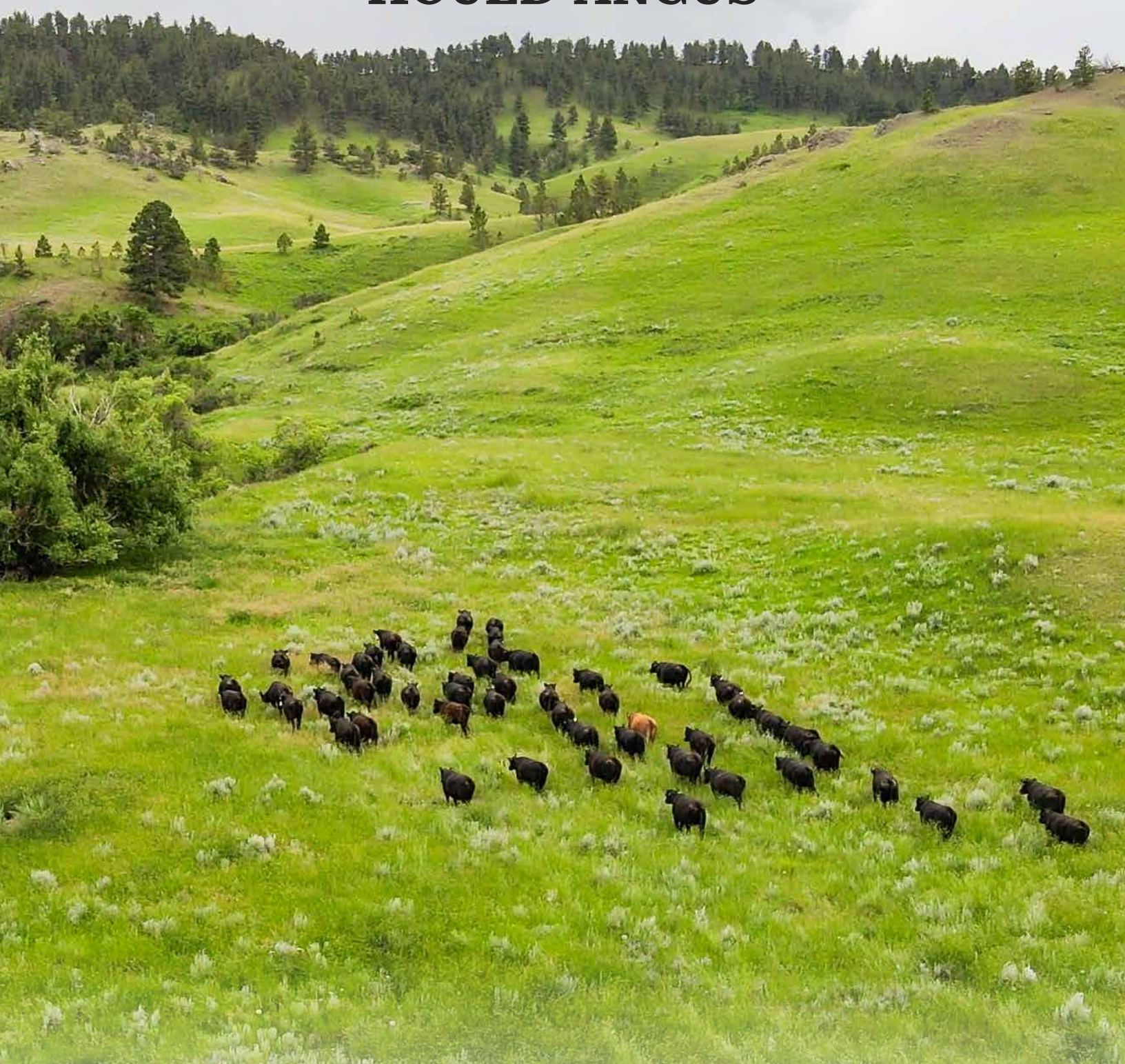
OCC Dixie Erica 628W



OCC Freedom 801F



HOULD ANGUS



**CATTLE WITH MATERNAL PERFORMANCE.
GENETICS WITH MATERNAL INTEGRITY.**

▶ www.houldangus.com ◀